



Hemtack

ENGINEERING CHANGE ORDER

REQUEST DATE	1/4/2023	REQUESTED BY	H. AMEZQUITA	REQUESTED RELEASE DATE	1/13/2023	ECO #	ECO-00084
AFFECTED PRODUCT LINES	FRONT MOUNT CORDLESS CUSTOM ROMAN SHADE WITH VALANCE, INSIDE MOUNT ONLY.						
REASON FOR CHANGE	IMPROVE VALANCE PLACEMENT AND MAKE INSTALLATION PROCESS EASIER FOR OUR CLIENTS AND CUSTOMERS.						
DESCRIPTION OF CHANGE	CHANGE MOUNTING METHOD FOR VALANCE						
COST IMPACT	N/A						
DOCUMENT / PART NUMBER	OLD REV	NEW REV	DOCUMENT/ PART DESCRIPTION	CHANGE DESCRIPTION	FORM, FIT, OR FUNCTION AFFECTED <small>Yes, or No</small>	PART DISPOSITION <small>(USE AS IS) (REWORK) (SCRAP) (OBSOLETE) (RETURN TO VENDOR) (OTHER)</small>	
ENGREP073	-	1	CORDLESS CRS FRONT MOUNT VALANCE (INSIDE MOUNT) CHANGE IN VELCRO PLACEMENT	IMPLEMENT CHANGE IN AFFECTED PRODUCT LINES	NO	N/A	
ADDITIONAL INFORMATION							
AFFECTED DOCUMENTS / PROCESSES (CHECK ALL THAT APPLY)							
BOM / CONFIG	<input checked="" type="checkbox"/>	PRODUCT / PART SPEC	<input checked="" type="checkbox"/>	QC CHECKLIST	<input checked="" type="checkbox"/>	PART DRAWING	<input type="checkbox"/>
				ASSEMBLY DRAWING	<input type="checkbox"/>	INSTR SHEET	<input checked="" type="checkbox"/>
				PROCESS VISUAL AIDS	<input checked="" type="checkbox"/>	WORK INSTRUCTIONS	<input checked="" type="checkbox"/>
ECO APPROVALS ROUTING							
APPROVER	APPROVAL REQUIRED	APPROVER NAME	APPROVAL STATUS	APPROVED ON	NOTES		
PHASE II MANAGEMENT (US - DL)	<input checked="" type="checkbox"/>	T. DAVIDSON	APPROVED	01/04/2023			
PHASE II PROD DEV (US - NY)	<input checked="" type="checkbox"/>	L. HUNT	APPROVED	01/04/2023			
MANAGEMENT (MX)	<input checked="" type="checkbox"/>	L. MONTEJO	APPROVED	01/04/2023			
QC / ENG (MX)	<input checked="" type="checkbox"/>	H. AMEZQUITA	APPROVED	01/04/2023			
IT (MX)	<input checked="" type="checkbox"/>	E. CASTELLANOS	APPROVED	01/04/2023			
PRODUCTION (MX)	<input type="checkbox"/>						
MATERIALS (MX)	<input type="checkbox"/>						

ACTIONS REQUIRED

BOM / CONFIG	<input checked="" type="checkbox"/>	WILL BE MODIFIED BY IT (MX)
PRODUCT / PART SPEC	<input checked="" type="checkbox"/>	WILL BE MODIFIED QC / ENG (MX)
QC CHECKLIST	<input checked="" type="checkbox"/>	WILL BE MODIFIED QC / ENG (MX)
PART DRAWING	<input type="checkbox"/>	WILL BE MODIFIED QC / ENG (MX)
ASSEMBLY DRAWING	<input type="checkbox"/>	WILL BE MODIFIED QC / ENG (MX)
INSTR SHEET	<input checked="" type="checkbox"/>	WILL BE MODIFIED PHASE II (USA)
PROCESS VISUAL AIDS	<input checked="" type="checkbox"/>	WILL BE MODIFIED QC / ENG (MX)
WORK INSTRUCTIONS	<input checked="" type="checkbox"/>	WILL BE MODIFIED QC / ENG (MX)

PICTURES, DRAWINGS, ETC.

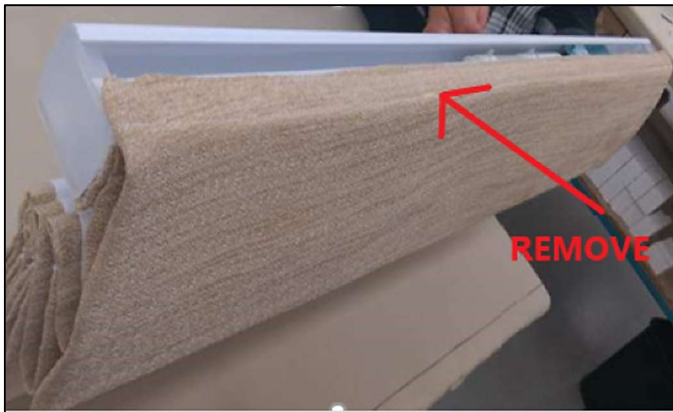


ENGINEERING REPORT

REPORT TITLE:	CORDLESS CRS FRONT MOUNT VALANCE (INSIDE MOUNT) CHANGE IN VELCRO PLACEMENT		REPORT DATE:	12/12/2022
REPORT NUMBER:	ENGREP073	CREATED BY:	Gladys B. Perez	
QA & ENGINEERING APPROVAL	CC:			
Hugo Amezcuita	Lee Hunt, Lisa Hernandez, Alejandro Montejo, Hugo Amezcuita			

1. Background:

We have received complaints of Cordless Front Mount Custom Roman Shade (CRS) being difficult to install with the valance option when mounted inside the window frame (inside mount). See picture 1 and 2.



Picture 1. Current shade construction.



Picture 2. Photos from an actual CRS installation.

The purpose of this test is to assess feasibility of a change in the construction of this type of shades and mounting option to allow the valance to be secured to the fabric front of the shade by a Velcro strip instead of the top front edge of the cordless headrail to eliminate problems during installation.

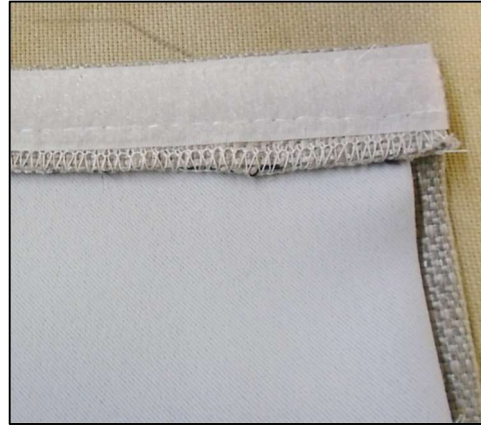
2. Analysis:

A Velcro loop strip was sewn to the front face of the fabric material (see picture 3). This loop will be used to install the valance which will have the Velcro hook sewn into the back.

Currently, a Velcro loop strip is sewn into the back of the fabric material (see picture 4). The Velcro hook is on the cordless headrail front part.



Picture 3. Front face of fabric material with velcro loop



Picture 4. Back of fabric material with velcro loop

These tests were performed with different fabric and liner combinations to evaluate potential difficulties during the Velcro sewing operation.

TEST 1	
PART NO.	DESCRIPTION
MPTE1378	TURBO SILVER
MPTE0383	LINING, 95% DIMOUT RD WHITE

TEST 2	
PART NO.	DESCRIPTION
MPTE0858	SRI LANKA HARVEST 57"
MPTE0386	LINING, STANDARD LF WHITE

TEST 3	
PART NO.	DESCRIPTION
MPTE1101	TWILIGHT BORDEAUX
MPTE0508	LINING, PREMIUM 100% BO WHITE

The double Velcro loop on the fabric material and lining did not generate issues for the sewing personnel. The installation of the valance on the sample shades was easy as well.



Picture 5. Valance with Velcro hook mounted on top of fabric material



Picture 6. Fabric material with double Velcro loop (front and back)



Picture 7. Valance installed

3. Conclusion:

This change is easy to implement. Training required is minimal for the production personnel involved in the sewing and valance operations. Also, we believe this change help the installation process for IM Front Mount Cordless Custom Roman Shades for our clients and customers.

Velcro hook part number used for these tests is MPMI0730 VELCRO 3/4 WHITE HOOK which is sewn into the valance.