



Hemtack

# ENGINEERING CHANGE ORDER

REQUEST DATE	8/29/2022	REQUESTED BY	H. AMEZQUITA	REQUESTED RELEASE DATE	9/2/2022	ECO #	<b>ECO-00070</b>								
AFFECTED PRODUCT LINES	CORDLESS FABRIC ROMAN SHADES														
REASON FOR CHANGE	NEW PART NUMBERS RELEASE FOR SAFETY LACE CORD AND ALUMINUM CORD CLIP, CF6 CORDLESS HEADRAIL HOLE PROVISION FOR SAFETY LACE CORD														
DESCRIPTION OF CHANGE	RELEASE PART NUMBERS FOR NEW COMPONENTS REQUIRED FOR CANADA CORDLESS FABRIC ROMAN SHADES. ADD HOLE PROVISION NEXT TO EACH CORD GUIDE IN CF6 CORDLESS HEADRAILS.														
COST IMPACT	N/A														
DOCUMENT / PART NUMBER	OLD REV	NEW REV	DOCUMENT/ PART DESCRIPTION	CHANGE DESCRIPTION	FORM, FIT, OR FUNCTION AFFECTED <small>Yes, or No</small>	PART DISPOSITION <small>(USE AS IS) (REWORK) (SCRAP) (OBSOLETE) (RETURN TO VENDOR) (OTHER)</small>									
MPMI1426	-	-	SAFETY LACE CORD, 15MM HD POLYESTER WHITE	NEW PART NUMBER RELEASE	NO	N/A									
MPMI1428	-	-	CLIP, ALUMINUM 9 X 3 X 1 MM	NEW PART NUMBER RELEASE	NO	N/A									
MPMI1202	-	-	PVC HEAD RAIL CF6 24	ADD Ø 3.5 MM SAFETY LACE CORD HOLES	YES	N/A									
MPMI1203	-	-	PVC HEAD RAIL CF6 36	ADD Ø 3.5 MM SAFETY LACE CORD HOLES	YES	N/A									
MPMI1204	-	-	PVC HEAD RAIL CF6 48	ADD Ø 3.5 MM SAFETY LACE CORD HOLES	YES	N/A									
MPMI1205	-	-	PVC HEAD RAIL CF6 60	ADD Ø 3.5 MM SAFETY LACE CORD HOLES	YES	N/A									
MPMI1206	-	-	PVC HEAD RAIL CF6 72	ADD Ø 3.5 MM SAFETY LACE CORD HOLES	YES	N/A									
MPMI1207	-	-	PVC HEAD RAIL CF6 84	ADD Ø 3.5 MM SAFETY LACE CORD HOLES	YES	N/A									
MPMI1236	-	-	PVC HEAD RAIL CF6 24   HD	ADD Ø 3.5 MM SAFETY LACE CORD HOLES	YES	N/A									
MPMI1237	-	-	PVC HEAD RAIL CF6 36   HD	ADD Ø 3.5 MM SAFETY LACE CORD HOLES	YES	N/A									
MPMI1238	-	-	PVC HEAD RAIL CF6 48   HD	ADD Ø 3.5 MM SAFETY LACE CORD HOLES	YES	N/A									
MPMI1239	-	-	PVC HEAD RAIL CF6 60   HD	ADD Ø 3.5 MM SAFETY LACE CORD HOLES	YES	N/A									
MPMI1240	-	-	PVC HEAD RAIL CF6 72   HD	ADD Ø 3.5 MM SAFETY LACE CORD HOLES	YES	N/A									
MPMI1241	-	-	PVC HEAD RAIL CF6 84C   HD	ADD Ø 3.5 MM SAFETY LACE CORD HOLES	YES	N/A									
ADDITIONAL INFORMATION	STARTING PO#1923134 FOR CF6 HEADRAILS														
<b>AFFECTED DOCUMENTS / PROCESSES (CHECK ALL THAT APPLY)</b>															
BOM / CONFIG	<input checked="" type="checkbox"/>	PRODUCT / PART SPEC	<input checked="" type="checkbox"/>	QC CHECKLIST	<input checked="" type="checkbox"/>	PART DRAWING	<input type="checkbox"/>	ASSEMBLY DRAWING	<input type="checkbox"/>	INSTR SHEET	<input type="checkbox"/>	PROCESS VISUAL AIDS	<input checked="" type="checkbox"/>	WORK INSTRUCTIONS	<input checked="" type="checkbox"/>
<b>ECO APPROVALS ROUTING</b>															
APPROVER	APPROVAL REQUIRED	APPROVER NAME	APPROVAL STATUS	APPROVED ON	NOTES										
PHASE II MANAGEMENT (US - DL)	<input checked="" type="checkbox"/>	T. DAVIDSON	APPROVED	08/29/2022											
PHASE II PROD DEV (US - NY)	<input checked="" type="checkbox"/>	L. HUNT	APPROVED	09/06/2022											
MANAGEMENT (MX)	<input checked="" type="checkbox"/>	L. MONTEJO	APPROVED	09/08/2022											

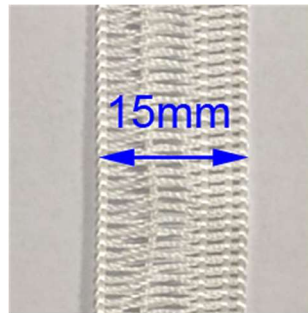
QC / ENG (MX)	<input checked="" type="checkbox"/>	H. AMEZQUITA	APPROVED	08/29/2022	
IT (MX)	<input checked="" type="checkbox"/>	E. CASTELLANOS	APPROVED	08/29/2022	
PRODUCTION (MX)	<input type="checkbox"/>				
MATERIALS (MX)	<input type="checkbox"/>				

**ACTIONS REQUIRED**

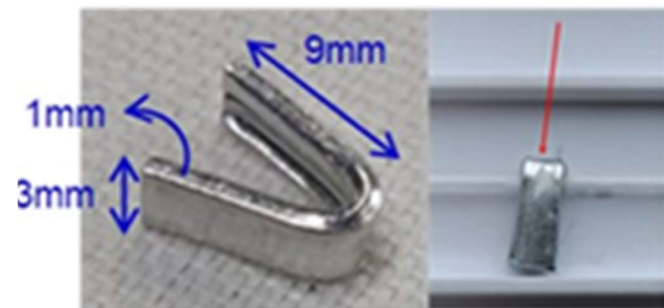
BOM / CONFIG	<input checked="" type="checkbox"/>	WILL BE MODIFIED BY IT (MX)
PRODUCT / PART SPEC	<input checked="" type="checkbox"/>	WILL BE MODIFIED QC / ENG (MX)
QC CHECKLIST	<input checked="" type="checkbox"/>	WILL BE MODIFIED QC / ENG (MX)
PART DRAWING	<input type="checkbox"/>	WILL BE MODIFIED QC / ENG (MX)
ASSEMBLY DRAWING	<input type="checkbox"/>	WILL BE MODIFIED QC / ENG (MX)
INSTR SHEET	<input type="checkbox"/>	WILL BE MODIFIED PHASE II (USA)
PROCESS VISUAL AIDS	<input checked="" type="checkbox"/>	WILL BE MODIFIED QC / ENG (MX)
WORK INSTRUCTIONS	<input checked="" type="checkbox"/>	WILL BE MODIFIED QC / ENG (MX)

**PICTURES, DRAWINGS, ETC.**

Item	Qty	UM	Stock No.	Description	FTY Cost	FTY TTL	FOB Sold	FOB TTL
1	42240	FT		CF LACE TAPE SAFETY CORD -WHITE COLOR	0.0305	1,288.32	0.0339	1,431.94
2	10000	EA		METAL CLIP - U CLAMP(ALUMINUM) - 9MM(L) X 3MM(W)	0.0094	94.00	0.0104	104.00
						1,382.32		1,535.94



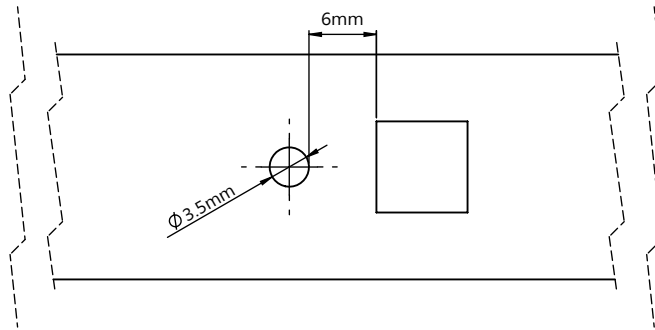
**MPMI1426**



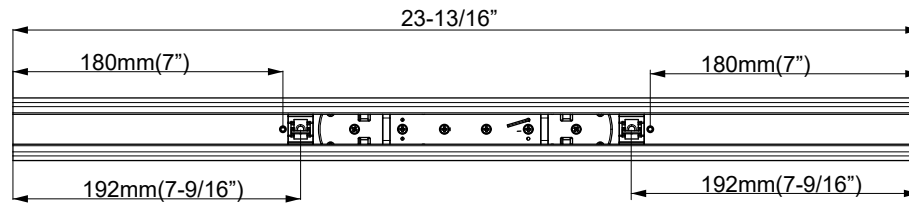
**MPMI1428**

# Roman Shade H/R Kits- add 3.5mm hole ( Regular & HD)

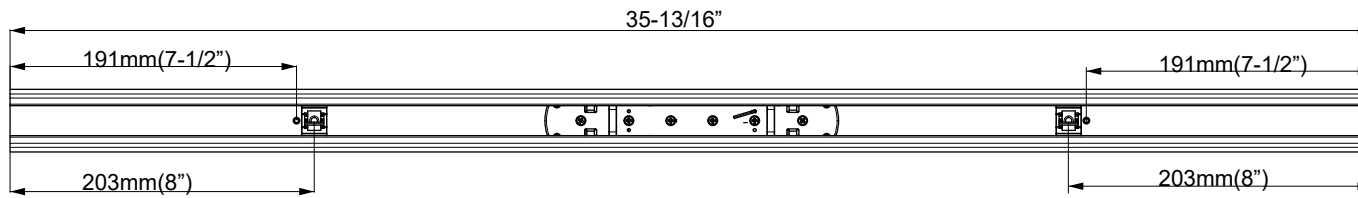
2022/3/21



24"W  
2 cords



36"W  
2 cords



48"W  
4 cords

