



Hemtack

ENGINEERING CHANGE ORDER

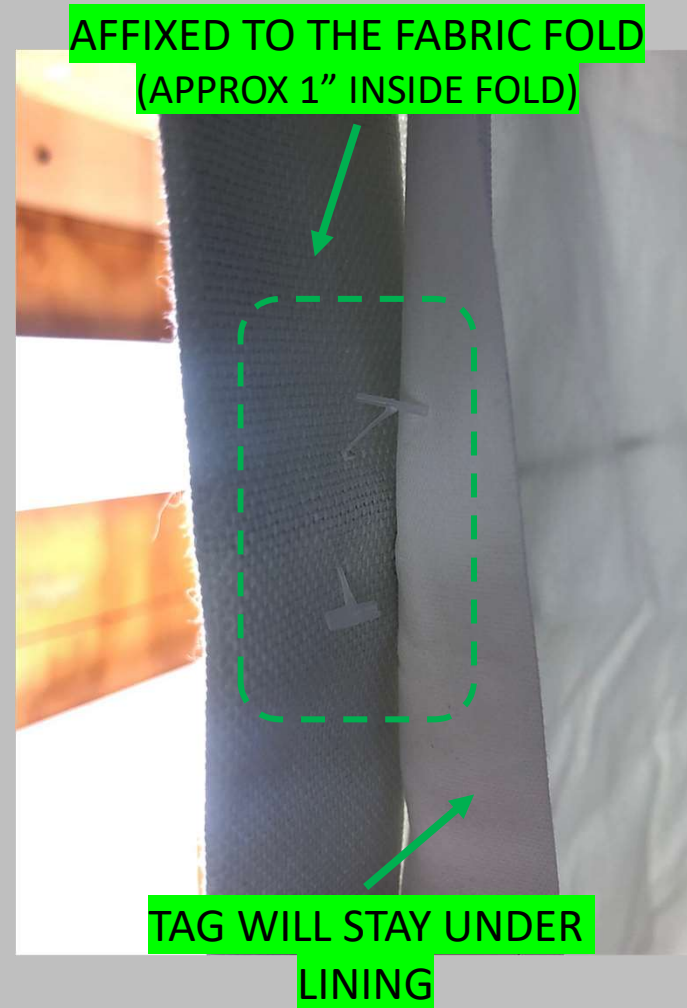
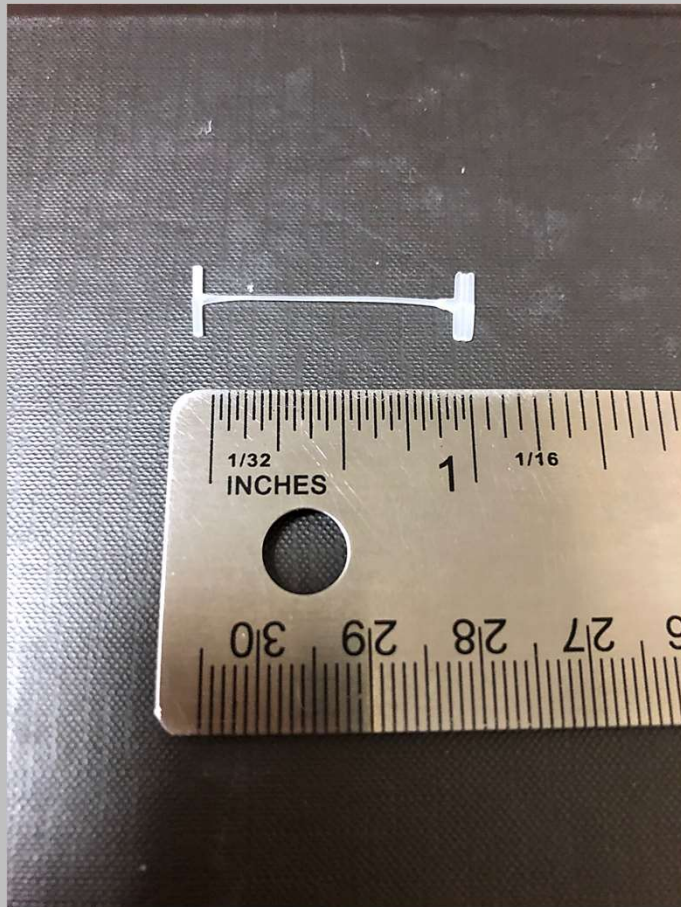
REQUEST DATE	2/11/2021	REQUESTED BY	H. AMEZQUITA	REQUESTED RELEASE DATE	2/19/2021	ECO #	ECO-00023
AFFECTED PRODUCT LINES	CUSTOM ROMAN SHADES						
REASON FOR CHANGE	CUSTOM ROMAN SHADES IMPROVEMENTS – TAG FASTENER FOR FIBERGLASS RODS, ADJUSTABLE CORD ORBS						
DESCRIPTION OF CHANGE	ADD ADJUSTABLE CORD ORBS TO LEVEL THE BOTTOM OF CUSTOM ROMAN SHADES. ADD PLASTIC TAG FASTENER AT EACH SIDE OF THE POCKET TO HOLD FIBERGLASS RODS IN PLACE.						
COST IMPACT	MPMI1330: \$0.0540 EA USD, MEMI0064: \$0.01 EA USD						
DOCUMENT / PART NUMBER	OLD REV	NEW REV	DOCUMENT/ PART DESCRIPTION	CHANGE DESCRIPTION	FORM, FIT, OR FUNCTION AFFECTED <small>Yes, or No</small>	PART DISPOSITION <small>(USE AS IS) (REWORK) (SCRAP) (OBSOLETE) (RETURN TO VENDOR) (OTHER)</small>	
MEMI0064			TAG FASTENER (PLASTIFLECHA), 1" CLEAR	NEW PART NUMBER	NO	N/A	
MPMI1330			ADJUSTABLE ORB CRS, WHITE	NEW PART NUMBER	NO	N/A	
ADDITIONAL INFORMATION	ADD 1 EA MPMI1330 ADJUSTABLE ORB CRS, WHITE PER EACH CORD AT BOTTOM END OF THE SHADE. ADD 1 EA MEMI0064 TAG FASTENER (PLASTIFLECHA), 1" CLEAR AT EACH END OF THE POCKET IN BACK FOLD UNDERNEATH THE LINING.						
AFFECTED DOCUMENTS / PROCESSES (CHECK ALL THAT APPLY)							
BOM / CONFIG	<input checked="" type="checkbox"/>	PRODUCT / PART SPEC	<input checked="" type="checkbox"/>	QC CHECKLIST	<input checked="" type="checkbox"/>	PART DRAWING	<input type="checkbox"/>
				ASSEMBLY DRAWING	<input type="checkbox"/>	INSTR SHEET	<input checked="" type="checkbox"/>
				PROCESS VISUAL AIDS	<input checked="" type="checkbox"/>	WORK INSTRUCTIONS	<input checked="" type="checkbox"/>
ECO APPROVALS ROUTING							
APPROVER	APPROVAL REQUIRED	APPROVER NAME	APPROVAL STATUS	APPROVED ON	NOTES		
PHASE II MANAGEMENT (US - DL)	<input type="checkbox"/>	T. DAVIDSON	APPROVED	02/16/2021			
PHASE II PROD DEV (US - NY)	<input type="checkbox"/>	L. HUNT	APPROVED	02/16/2021			
MANAGEMENT (MX)	<input type="checkbox"/>	L. MONTEJO	APPROVED	02/19/2021			
QC / ENG (MX)	<input type="checkbox"/>	H. AMEZQUITA	APPROVED	02/11/2021			
IT (MX)	<input type="checkbox"/>	E. CASTELLANOS	APPROVED	02/11/2021			
PRODUCTION (MX)	<input type="checkbox"/>						
MATERIALS (MX)	<input type="checkbox"/>						
ACTIONS REQUIRED							
BOM / CONFIG	<input checked="" type="checkbox"/>	WILL BE MODIFIED BY IT (MX)					
PRODUCT / PART SPEC	<input checked="" type="checkbox"/>	WILL BE MODIFIED QC / ENG (MX)					
QC CHECKLIST	<input checked="" type="checkbox"/>	WILL BE MODIFIED QC / ENG (MX)					

PART DRAWING	<input type="checkbox"/>	WILL BE MODIFIED QC / ENG (MX)
ASSEMBLY DRAWING	<input type="checkbox"/>	WILL BE MODIFIED QC / ENG (MX)
INSTR SHEET	<input checked="" type="checkbox"/>	WILL BE MODIFIED QC / ENG (MX)
PROCESS VISUAL AIDS	<input checked="" type="checkbox"/>	WILL BE MODIFIED QC / ENG (MX)
WORK INSTRUCTIONS	<input checked="" type="checkbox"/>	WILL BE MODIFIED QC / ENG (MX)

PICTURES, DRAWINGS, ETC.

FLAT CRS – STAYS IN DIAGONAL ISSUE

Proposed Solution: *use 1" Plastic price tag fastener on each end of the fiber glass stay*





BACK



BACK

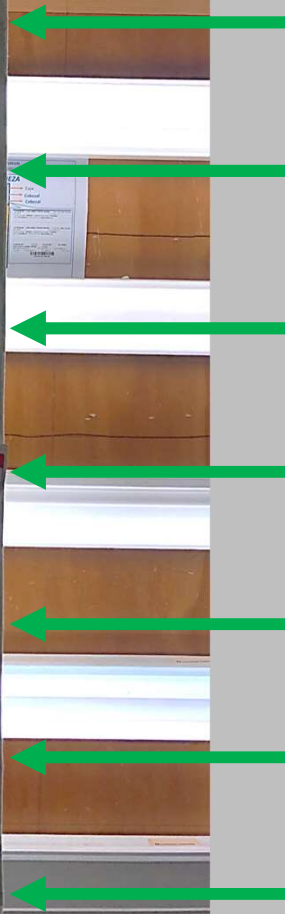
NOT VISIBLE FROM FRONT PART OF SHADE



FRONT



FRONT



**FIBER GLASS STAYS
HORIZONTAL**

TEST

CORD ADJUSTING ORB TEST



CORD ADJUSTING ORB TEST



CORDLESS CRS:

<https://youtu.be/DBvLjyNiHGU>

CCL CRS:

<https://youtu.be/-cqst7wQn-Y>

CORDED CRS:

<https://youtu.be/KlmysMFhfqs>